

How to install MAUSB-2 Driver for Windows 2000 Professional

Description

This document explains how to install the CAMEDIA MAUSB-2 driver on a Windows 2000 Professional system.

System Requirements

- Pentium or compatible computer with USB interface
- Microsoft Windows 2000 Professional

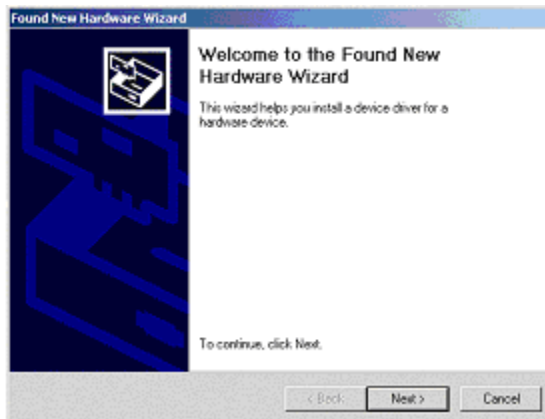
Preparation

- Download the file into a folder (e.g. C:\temp)
- Start the program by double click the file 1.01sm201y.exe
- Select a folder to uncompress all needed files to. By default the folder 1.01sm201y is created with the files smoly.inf and smoly.sys inside.

Note: Don't use the Desktop for this, it might not work correctly.

Installation

- Start up your Windows 2000 Professional system.
- Log in. You need administrative rights to install the driver.
- Connect MAUSB-2 to your computer
- The Hardware wizard will appear



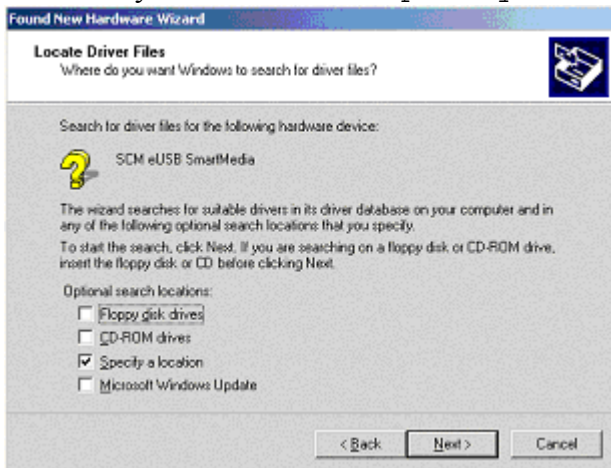
Click Next

Select: Search for suitable driver for my device



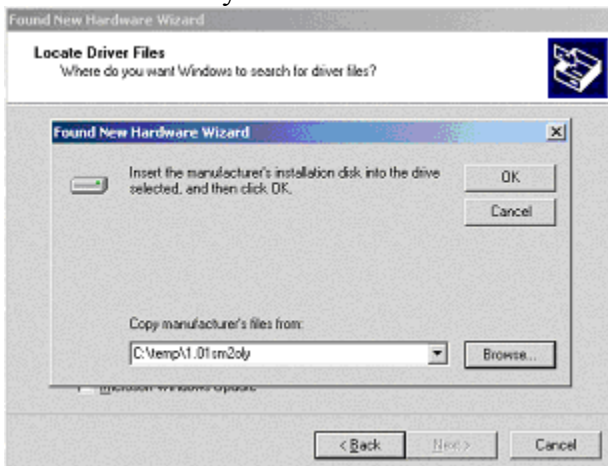
Click Next

- Check only the checkbox for Specify a location



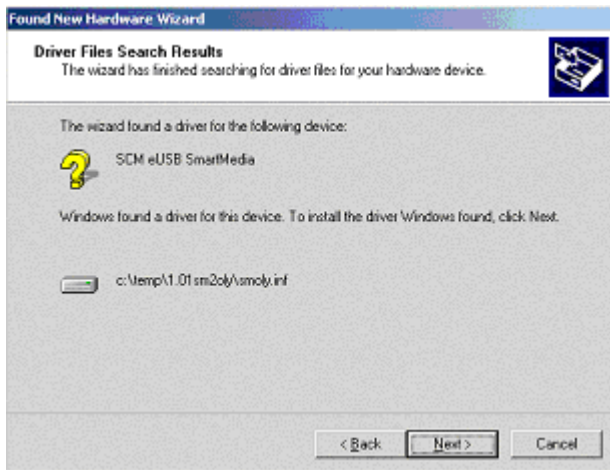
Click Next

- Point to the newly created folder



Click OK

- The following dialog appears



Click Next

- The following dialog appears



Click Finish

Now MAUSB-2 is automatically recognised when it is connected to the PC.

© 2000 OLYMPUS Optical. All rights reserved.

CAMEDIA and MAUSB are either registered trademarks or trademarks of OLYMPUS Optical.

Microsoft and Windows are either registered trademarks or trademarks of Microsoft Corporation in the United States and/or other countries.