

OLYMPUS®

# Quick Start Guide SP-500 UZ Start Here

For more information, please refer to the Basic & Advanced Manuals or visit: [www.olympusamerica.com/support](http://www.olympusamerica.com/support)

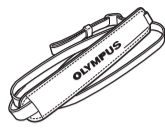
OLYMPUS IMAGING AMERICA INC.

## BEFORE YOU BEGIN

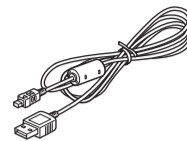
### Gather these items (box contents)



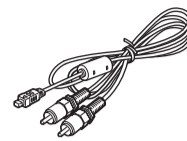
Digital Camera

Lens Cap/  
Lens Cap String

Strap

AA (R6) Alkaline Batteries  
(four)

USB Cable



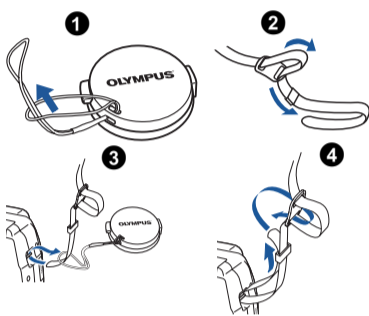
AV Cable

OLYMPUS Master  
Software CD-ROM

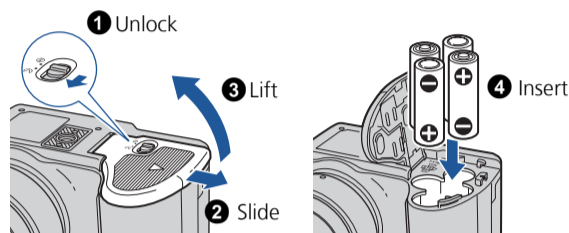
Items not shown: Advanced Manual (CD-ROM), Basic Manual, warranty card. Contents may vary depending on purchase location.

## 1 GET STARTED

### a. Attach the strap and lens cap

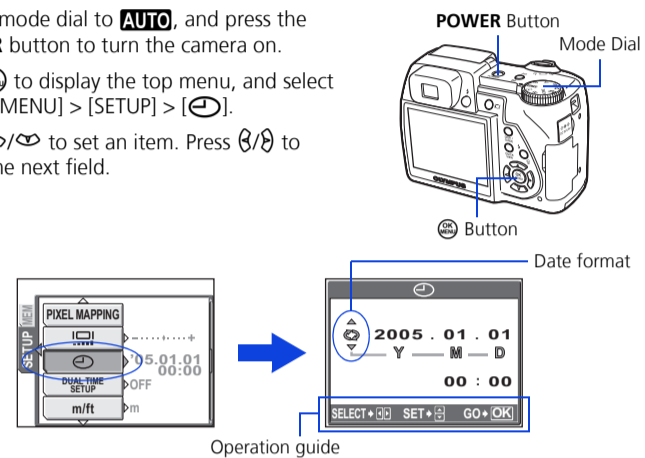


### b. Insert the batteries



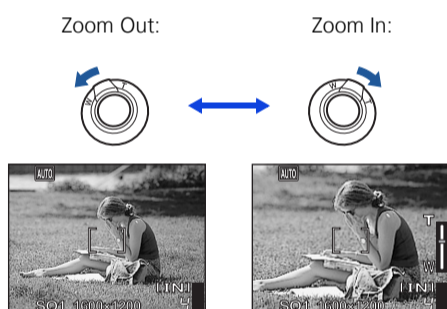
### c. Set the date and time

- Set the mode dial to **AUTO**, and press the **POWER** button to turn the camera on.
- Press **DISP./GUIDE** to display the top menu, and select [MODE MENU] > [SETUP] > [DATE/TIME].
- Press **DISP./GUIDE** to set an item. Press **DISP./GUIDE** to select the next field.



## 2 TAKE A PICTURE

### a. Zoom



### b. Focus

- Using the monitor, place the AF target mark over your subject.

Green Lamp



(Pressed Halfway)



Shutter Button

- Press and hold the shutter button halfway to lock the focus.

- The green lamp indicates the focus and exposure are locked.

### c. Take the picture

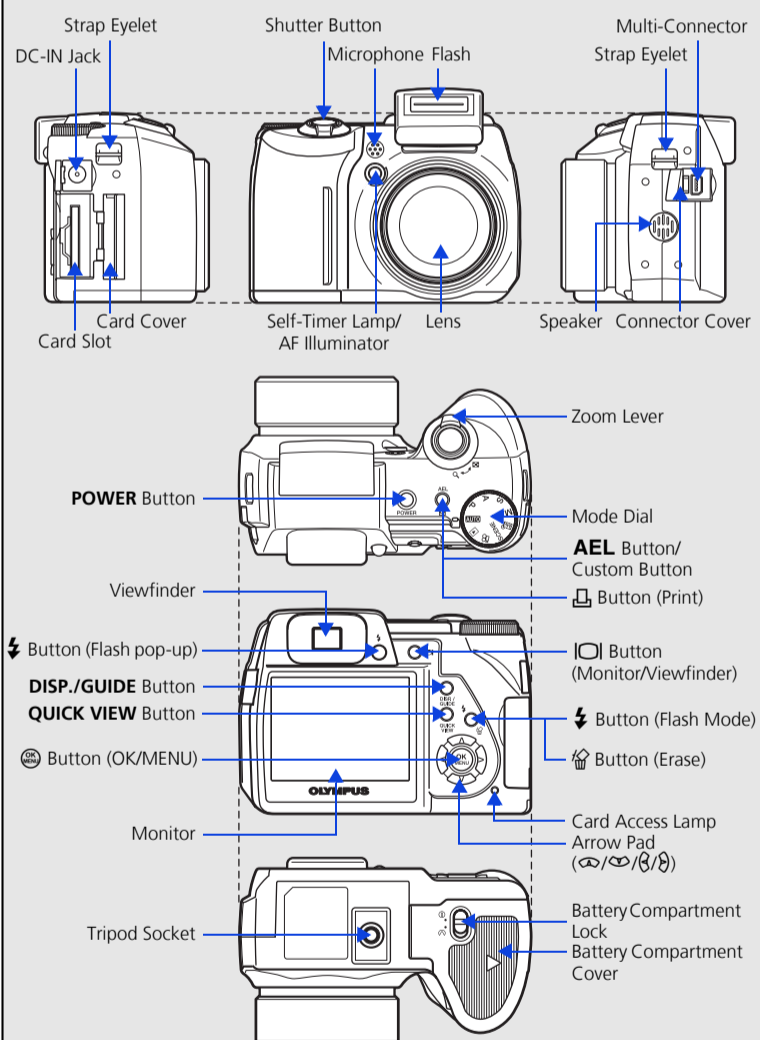
- Press the shutter button completely to take the picture.

(Pressed Completely)



Shutter Button

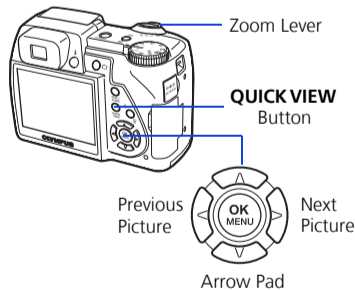
## CAMERA DIAGRAM



## 3 REVIEW OR ERASE A PICTURE

### a. Press the QUICK VIEW button

- The last picture taken will be displayed.

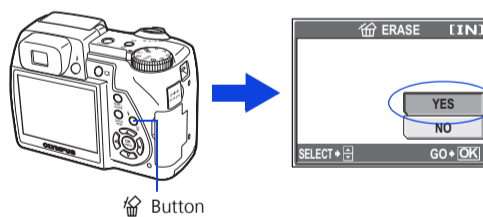


### b. Take a closer look

- Pull the zoom lever toward T or W to zoom in or out.
- Press **DISP./GUIDE** to return to the original size.
- Press the arrow pad (**DISP./GUIDE**) to scroll around.

Press the **QUICK VIEW** button again to return to shooting mode.

### c. To erase a picture



- Display the picture you want to erase.
- Press the **DISP./GUIDE** button.
- Select [YES], and press **DISP./GUIDE**.

- The picture is permanently erased.

## 4 TRANSFER IMAGES

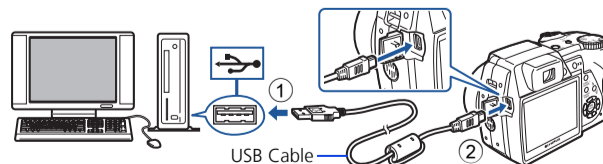
### a. Install the software

- Insert the OLYMPUS Master CD-ROM.
- Windows:** Click the "OLYMPUS Master" button.
- Macintosh:** Double-click the "Installer" icon.
- Simply follow the on-screen instructions.
  - Remember to register your camera when you install OLYMPUS Master or visit: [www.olympusamerica.com/prodreg](http://www.olympusamerica.com/prodreg)

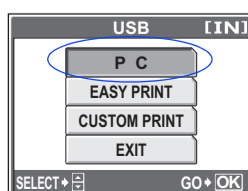


### b. Connect the camera to the computer

- Connect the camera and computer using the USB cable (included).



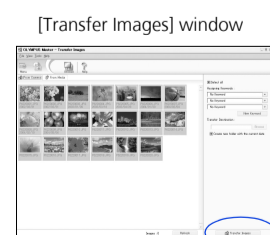
- Select [PC] on the monitor, and press **DISP./GUIDE**.



- Your PC will now recognize your camera as a removable storage drive.

### c. Transfer images to the computer

- With the camera now connected, open OLYMPUS Master.
  - The [Transfer Images] window is displayed.
- Select the images you want to transfer, and click the [Transfer Images] button.



If the [Transfer Images] window is not displayed automatically:

- Click the "Transfer Images" icon on the OLYMPUS Master main menu.
- Click the "From Camera" icon.

[Transfer Images] button