

OLYMPUS[®]

OLYMPUS[®]

© 2015 OLYMPUS CORPORATION

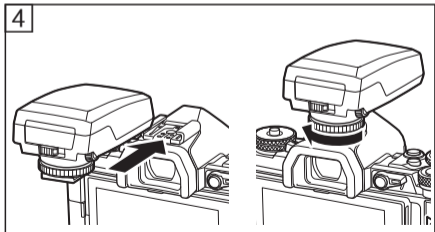
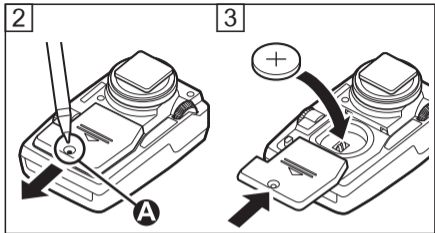
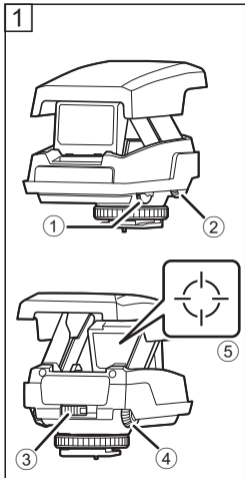
date of issue 2015.01.

WC887001

Printed in China

EE-1

CE



EN INSTRUCTIONS

Thank you for purchasing this Olympus product. To ensure your safety, please read this instruction manual before use, and keep it handy for future reference.

Name of parts (Figure 1)

- ① Target brightness adjustment dial
- ② Sight horizontal positioning dial
- ③ Pop-up switch
- ④ Sight vertical positioning dial
- ⑤ Target indicator

Inserting the Battery

Insert a pen or other object into part (A) and open the battery compartment cover (Figure 2). Insert the battery in the orientation shown and close the cover (Figure 3). The supplied battery is for test purposes only.

Use

Mount the product on the camera hot shoe (Figure 4). Press the pop-up switch to ready the sight and rotate the target brightness adjustment dial to adjust brightness. Rotating the dial to OFF turns the product off, as does returning the sight to the closed position. Use

the sight positioning dials to position the target while viewing the subject in the camera monitor.

Precautions for Use

- Do not use excessive force.
- When replacing the battery, be careful that water does not enter the battery compartment.
- Some lenses and cameras may interfere with operation when the device is attached. In addition, some lenses and hoods may obstruct the target.

Main Specifications

Target indicator : Red

Power source : One (1) CR2032 lithium battery

Weight : 72.2 g (2.5 oz.)
(including battery)

Dimensions : Approx. 46.2 (W) x 39.3 (H) x
77.1 (D) mm (1.8 x 1.5 x 3.0 in.)

* Specifications are subject to change without any notice or obligation on the part of the manufacturer.

Precautions: Be Sure to Read the Following



Warnings: Safety Precautions

- Do not use the product if the battery compartment cover can not be completely closed.
- Keep the product and battery out of reach of children.
- Observe all necessary precautions when handling batteries. Batteries may leak, overheat, or rupture if improperly handled. When inserting batteries, be sure they are in the correct orientation.
- Under no circumstances should you expose batteries to heat or to open flame or disassemble, short-circuit, or attempt to recharge batteries. These actions are extremely dangerous and could cause the batteries to overheat, catch fire, or rupture.
- Consult a physician immediately should swallow or otherwise ingest a battery.
- Should you notice smoke or an unusual smell coming from the product, cease use immediately and contact an authorized distributor or Olympus service center.

This product uses a Lithium Battery which contains Perchlorate material - special handling may apply.

See www.dtsc.ca.gov/hazardouswaste/perchlorate/.

● Technical Support (U.S.A. / Canada)

24/7 online automated help :
<http://www.olympusamerica.com/support>
Phone customer support :
Tel.1-800-260-1625 (Toll-free)
Our phone customer support is available
from 9 am to 9 pm (Monday to Friday) ET
E-Mail : distec@olympus.com

For customers in Europe



The "CE" mark indicates that this product complies with the European requirements for safety, health, environment and customer protection. CE-mark products are for sale in Europe.



This symbol [crossed-out wheeled bin WEEE Annex IV] indicates separate collection of waste electrical and electronic equipment in the EU countries.

Please do not throw the equipment into the domestic refuse.
Please use the return and collection systems available in your country for the disposal of this product.



This symbol [crossed-out wheeled bin Directive 2006/66/EC Annex II] indicates separate collection of waste batteries in the EU countries.

Please do not throw the batteries into the domestic refuse.
Please use the return and collection systems available in your country for the disposal of the waste batteries.

• European Technical Customer Support

Please visit our homepage

<http://www.olympus-europa.com>

or call: Tel. 00800 - 67 10 83 00 (Toll-free)

+49 40 - 237 73 899 (Charged)